



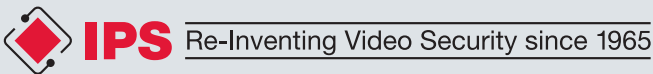
IPS Intelligent
Video Software

Video Security means intelligent
Video Surveillance with the IPS
Factor.

IPS VideoAnalytics (camera-based): Recognise
alarm situations before they occur

What is IPS Intelligent Video Software?

Securiton’s technology brand „IPS Intelligent Video Software“ originated in 1965 as a German manufacturer of high-end video analytics and video management solutions with in-depth know-how in this field. Since then, a dedicated and creative team of developers based in Munich has continuously expanded the product portfolio and developed suitable solutions for video security. The IPS brand has been part of Securiton Germany since 2006. Due to their proven and outstanding reliability, products with the IPS label are used in thousands of installations in Europe. Both small companies and global players from various high-security sectors rely on IPS video analytics. For example, correctional facilities, critical infrastructures, oil refineries and control centres are among the long-standing clientele. In addition, there are close partnerships with system integrators, distributors, providers and technology partners throughout Europe.



IPS VideoAnalytics (camera-based)

Intelligent Video Analytics for highest security

IPS VideoAnalytics are intelligent video analytics modules operated on cameras. The software informs in real-time about suspicious objects or events and supports your security staff in recognising potential threats before it is too late. IPS VideoAnalytics increase the effectiveness of your video surveillance system by reducing the amount of data, supporting your security staff and making relevant video material accessible within seconds.

| Product details | |
|--------------------|--|
| Languages | German, English, French, Italian, Spanish, Russian |
| Cameras | Axis (refer to compatibility list) Operation of one analytics module per camera Suitable for colour and thermal cameras |
| Platform | Axis Camera Applications Plattform (ACAP) |
| System integration | Open SDK for integration into third-party video management systems |

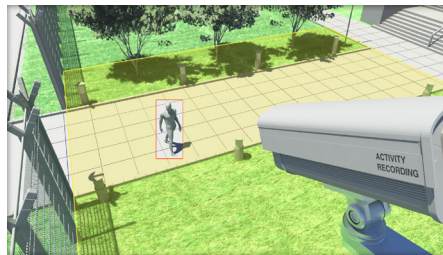




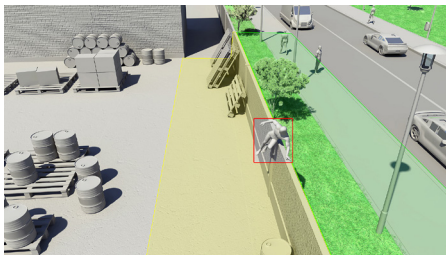
IPS VideoAnalytics (camera-based): Make Cameras more intelligent

IPS VideoAnalytics (camera-based) at a glance

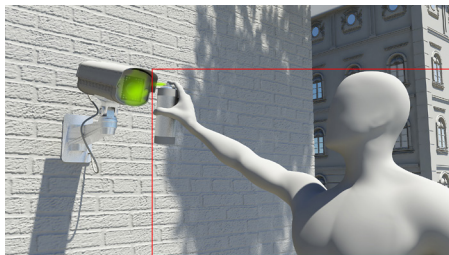
IPS offers 5 camera-based video analytics for various applications.



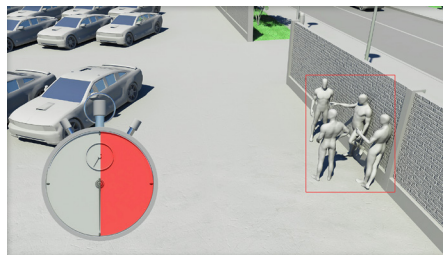
**IPS Motion Detection
(camera-based)**



**IPS Intrusion Detection
(camera-based)**



**IPS Sabotage Detection
(camera-based)**



**IPS Loitering Detection
(camera-based)**



**IPS Indoor Detection
(camera-based)**

Free trial version available!

The IPS VideoAnalytics (camera-based) can be integrated via the following platforms:

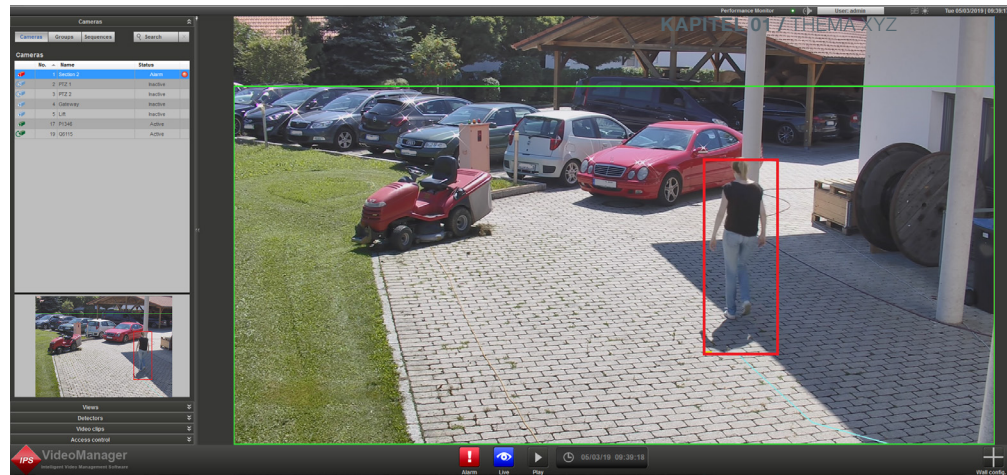
Axis: Axis Camera Application Platform (ACAP)



Application

- Remote surveillance centres
- Train stations
- Banks
- Prisons
- Industry
- Public Authorities
- Logistics

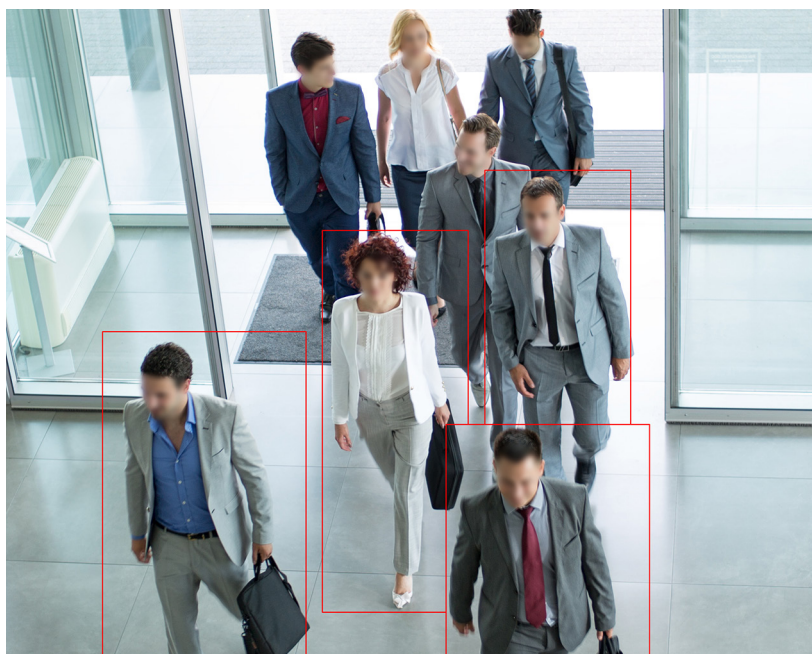
IPS Motion Detection (camera-based)



The intelligent video analytics module IPS Motion Detection (camera-based) alerts you in real time when motion is detected within predefined areas. It recognises the object size, determines the object movement and differentiates the perspectives. It enables event-driven recording that significantly reduces the bandwidth and storage requirements of video surveillance systems. Installation and configuration of this analytics module is very intuitive. It is suitable for indoor and outdoor applications. IPS Motion Detection (camera-based) is easy to configure and to integrate in cameras and encoders of varying manufacturers.

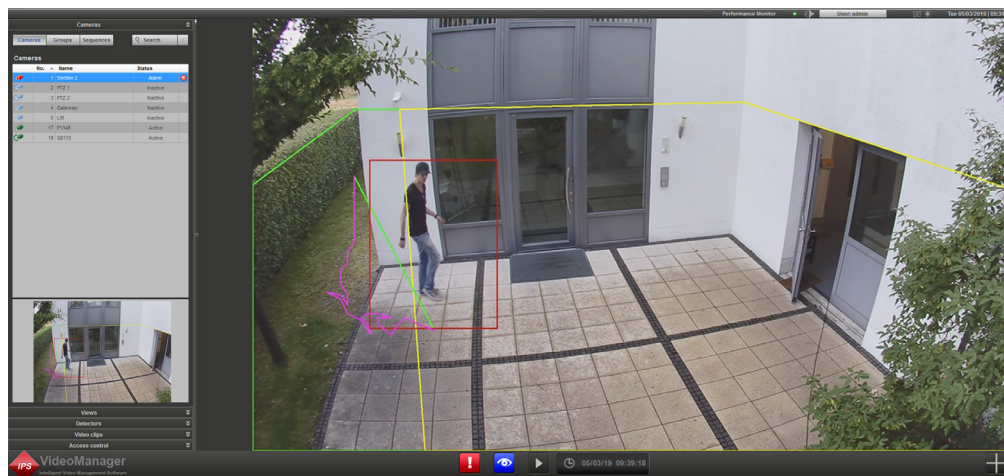
Key features

- Real-time alerting in case of moving objects in a predefined area
- Motion and activity recognition
- Video image analytics based on machine learning technologies guarantees low false alarm rate
- Configuration of capture and alarm zone
- Setting of object sizes and perspectives
- Transmission of alarm and meta data for display and search in a higher level system (e.g., VMS)
- Setup with web browser



Your benefits

- Higher effectiveness of your video surveillance system
- Recording search of relevant video footage within seconds
- Activity-controlled recording and searching reduces bandwidth and storage requirements
- Cost advantage due to early detection of suspicious behaviour and subsequently avoiding disturbances



IPS Intrusion Detection (camera-based)

The intelligent video analytics module IPS Intrusion Detection (camera-based) alerts you in real time when people or vehicles enter a secured outside area. The analytics is CPNI certified and with its zone concept, it allows an exact friend or foe recognition. In addition, it can be perfectly adjusted to its environment thanks to special filters. This facilitates a reliable detection of unauthorised access even under difficult weather conditions. Installation and configuration of this analytics module is very intuitive. IPS Intrusion Detection (camera-based) is easy to integrate in cameras and encoders of various manufacturers.

Key features

- Real time alerting in case of intrusion in a secured area
- Activity recognition, recognition of camera sabotage, objects are recognised and will be tracked
- Video image analysis based on machine learning technology guarantees a low false alarm rate
- Configuration of capture and alarm zone
- Setting of object sizes and perspectives
- Transmission of alarm and meta data for display and search in a higher level system (e.g., VMS)
- Setup with web browser



Your benefits

- Reliable perimeter protection, suitable for high security applications
- Activity-controlled recording and searching reduces bandwidth and storage requirements
- Recording search of relevant video footage within seconds
- Cost advantage due to early detection of suspicious behaviour and subsequently avoiding disturbances

IPS Sabotage Detection (camera-based)



IPS Sabotage Detection (camera-based) is an intelligent video analytics module for real-time alerting in case of camera tampering attempts (covering, redirecting, spraying, blinding). It recognises forms and positions of contours and allows the exact identification of deviations. This facilitates the immediate detection of tampering attempts, which substantially improves the reliability of video surveillance systems. Installation and configuration is straightforward and it is suitable for indoor and outdoor applications. IPS Sabotage Detection (camera-based) is easy to configure and to integrate in cameras and encoders of various manufacturers.

Key features

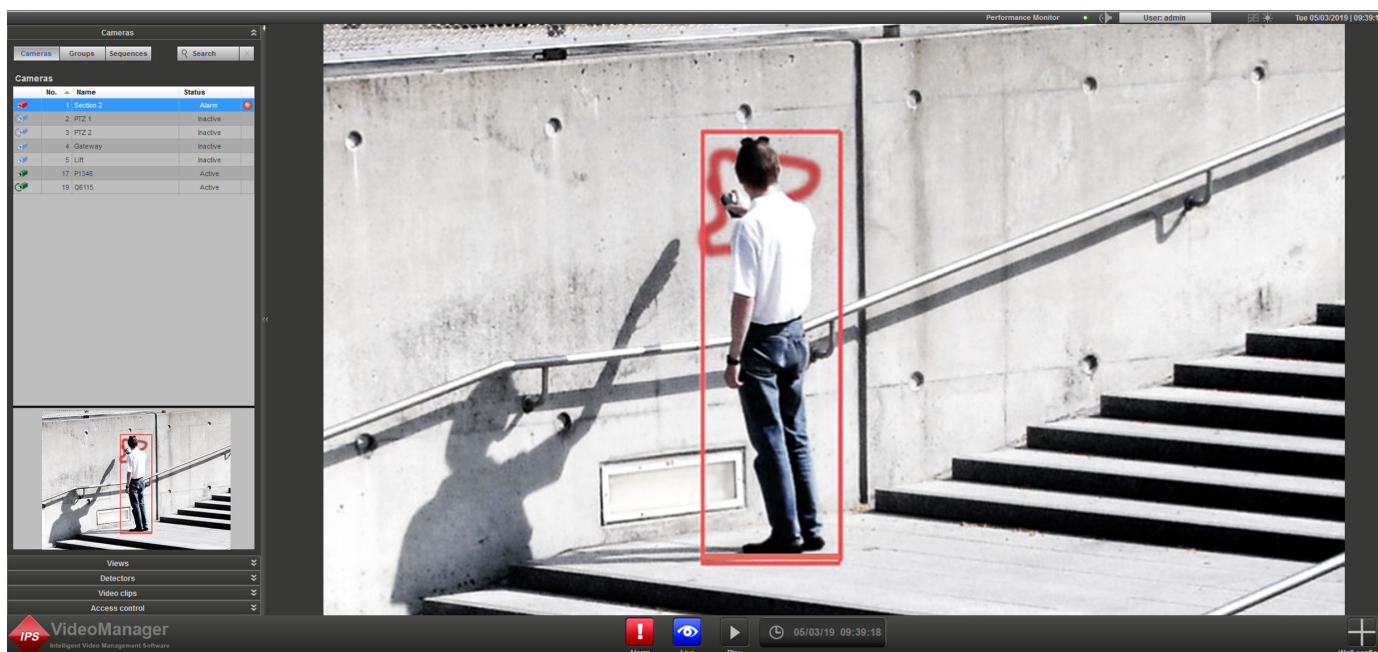
- Real-time alerting in case of camera tampering attempt
- Sabotage recognition of covering, redirecting, spraying and blinding of cameras
- Video image analysis based on machine learning technologies guarantees low false alarm rate
- Configuration of alarm zone
- Transmission of alarm and meta data for display and search in a higher level system (e.g., VMS)
- Setup with web browser

Your benefits

- Enhanced reliability of your video surveillance system
- Immediate and reliable detection of tampering attempts
- Intuitive installation and configuration
- Recording search of relevant video footage within seconds



IPS Loitering Detection (camera-based)



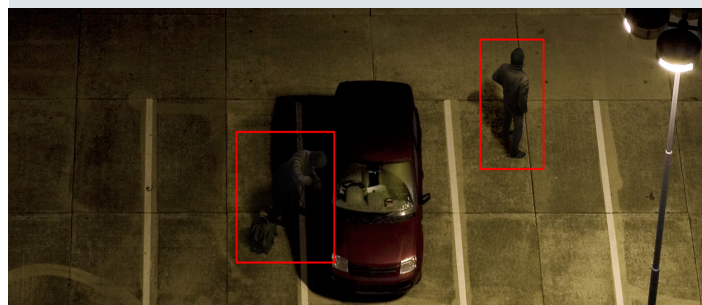
The intelligent video analytics module IPS Loitering Detection (camera-based) alerts you in real time when people dwell in a predefined area for an unusually long time. In case of suspicion, you can intervene quickly and prevent unwanted events such as vandalism. With its zone concept, it allows an exact recognition of suspicious movements. In addition, it can be perfectly adjusted to its environment. This analytics module is suitable for indoor and outdoor applications and provides reliable detection of loitering even under difficult weather conditions. IPS Loitering Detection (camera-based) is easy to configure and to integrate in cameras and encoders of various manufacturers.

Key features

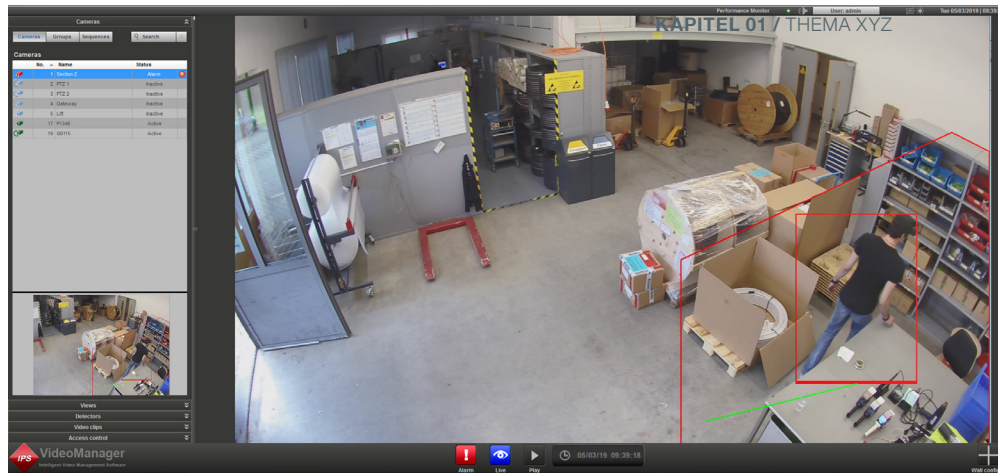
- Real time alerting in case of people loitering in a monitored area
- Recognition of loitering and slow movements as well as activity recognition
- Video analysis based on machine learning technology guarantees low false alarm rate
- Configuration of capture and alarm zone
- Setting of object sizes, object dwelling time (up to 30 minutes) and perspectives
- Transmission of alarm and meta data for display and search in a higher level system (e.g., VMS)
- Setup with web browser

Your benefits

- Activity-controlled recording and searching reduces bandwidth and storage requirements
- Intuitive installation and configuration
- Reliable loitering detection and low false alarm rate under difficult weather conditions
- Cost advantage due to early detection of suspicious behaviour and subsequently avoiding disturbances



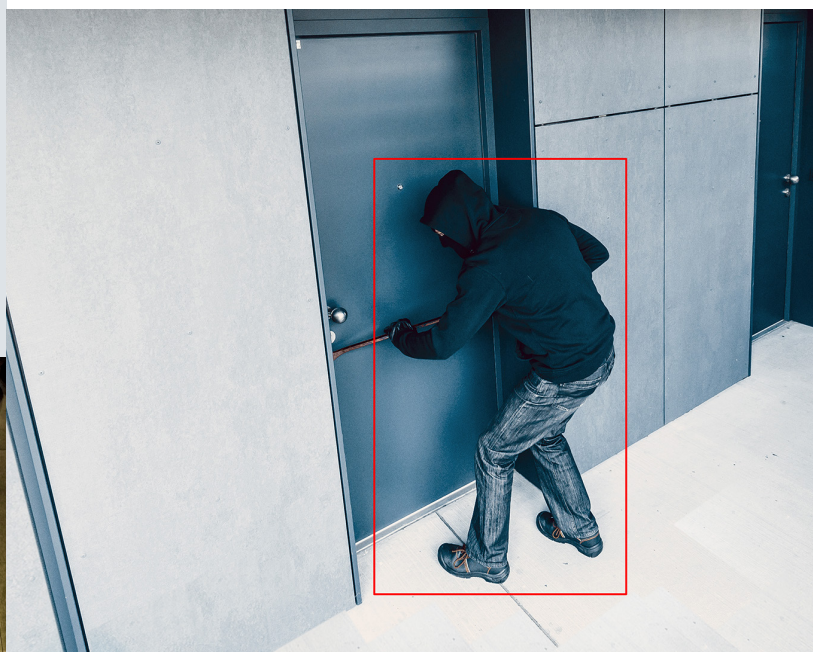
IPS Indoor Detection (camera-based)



The intelligent video analytics module IPS Indoor Detection (camera-based) alerts you in real time when persons or vehicles enter a secured indoor area. It recognizes the object size, determines the object movement and differentiates the perspectives. This facilitates a reliable detection of unauthorised access even under difficult lighting conditions. Installation and configuration is very intuitive. IPS Indoor Detection (camera-based) is easy to integrate in cameras and encoders of various manufacturers and particularly suitable for indoor applications.

Key features

- Real-time alerting in case of intrusion in a secured indoor area
- Activity and objects are recognised and will be tracked
- Video image analysis based on machine learning technology guarantees a low false alarm rate
- Configuration of capture and alarm zone
- Setting of object sizes and perspectives
- Transmission of alarm and meta data for display and search in a higher level system (e.g., VMS)
- Setup with web browser



Your benefits

- Reliable perimeter protection, suitable for high security applications
- Activity-controlled recording and searching reduces bandwidth and storage requirements
- Recording search of relevant video-footage within seconds
- Cost advantage due to early detection of suspicious behaviour



Securiton Deutschland

Alarm and Security Systems
Von-Drais-Strasse 33 | 77855 Achern | DE
www.securiton.de | willkommen@securiton.de

A company of the Swiss Securitas Group



For Distribution Partner:
Business Unit IPS | Kronstadter Straße 4 | 81677 München | DE
www.ips-analytics.com | ips@securiton.de